



SHANGHAI MINGDOU AGROCHEMICAL CO., LTD

Add: Rm 1210, Zhenyuan Building, No. 2052 North Zhongshan Rd, Shanghai, China

Tel: 0086 21 52912919, 52045380 Fax: 0086 21 52912097 Web: www.agromdc.com

MATERIAL SAFETY DATA SHEET OF BUTACHLOR 50% EC

1. IDENTIFICATION OF THE CHEMICAL PRODUCT AND COMPANY

Supplier: SHANGHAI MINGDOU AGROCHEMICAL CO., LTD

Address: Rm. 1210, Zhenyuan Building, No. 2052 North Zhongshan Rd, Shanghai, China

FAX: +86 21 52912097, 61638378

TEL: +86 21 52912919, 52045380, 52045370

Product name: Butachlor 50% EC

2. COMPOSITION/INFORMATION ON INGREDIENTS

Formulation Type: Emulsifiable concentrate

Active Ingredients: Butachlor

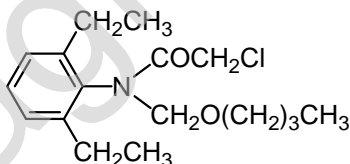
Chemical Abstracts name: *N*-(butoxymethyl)-2-chloro-*N*-(2,6-diethylphenyl)acetamide

CAS NO. 23184-66-9

Molecular Formula: C₁₇H₂₆ClNO₂

Molecular Weight: 311.9

Structural Formula:



Other ingredients determined not to be hazardous

INGREDIENT	CAS NO	PROPORTION
butachlor	23184-66-9	≥50%
other	Not available	≤50%

3. HAZARDS IDENTIFICATION

Dangers for the environment: Toxic to aquatic; low accumulation.

Physical-chemical dangers: Can decompose at high temperatures forming toxic gases.

4. FIRST AID MEASURES

Skin: Remove contaminated clothing and shoes, flush with plenty of water and soap.



Eyes: Flush with plenty of clear water for 15-20 minutes.

Inhalation: Move affect person to fresh air and keep at rest until recovered. If not breathing, give artificial respiration and get to a doctor.

Ingestion: Do not induce vomiting; drink plenty of water. Then see doctor immediately.

5. FIRE FIGHTING MEASURES

Extinguishing media: Water spray, foam, dry chemical powder and carbon oxide.

Measures of personal protection: Safety glasses or goggles, rubber gloves, shoes plus socks, long-sleeved shirt, and long pants.

6. ACCIDENT RELEASE MEASURES

Personal cautions: The product is harmful if inhaled or swallowed. Will irritate the eyes, nose, throat and skin. Avoid inhaling spray mist. Keep people and animals away and upwind.

Cleaning methods: clear the liquid formation. Transfer to a properly labelled deposit that will be closed and sealed until the recovery of elimination of the product.

Environmental cautions: prevent the contamination of the floor and of beds of water.

7. HANDLING AND STORAGE

Handling: Keep out of reach of children. Avoid contact with the eyes, skin and clothing and avoid inhalation of product or spray mist. If in eyes, wash it immediately with water. After handling and before eating, drinking or smoking, wash hands, arms and face thoroughly with soap and water. Do not contaminate food or use on household tanks.

Storage: Store in the closed, original container in a dry, cool, well-ventilated area, secure area at minimum storage temperatures. Store in locked room or place away from children, animals, food, animal feed, seed and fertilizers.

8. EXPOSURE CONTROLS/PERSONAL PROTECTION

Personal protective equipment: Full-length overalls

Respiratory protection: Approved respirator.

Protective gloves: Rubber gloves

Eye protection: Safety goggles or face shield.

Industrial hygiene: Ventilation.

9. PHYSICAL AND CHEMICAL PROPERTIES

Form: liquid.

Color: light yellow to brown.



Odor: with a faint, sweet odor.

Solubility in water: emulsion.

10. STABILITY AND REACTIVITY

Conditions to avoid: Avoid heat and fire.

Hazardous decomposition products: Toxic gases.

Hazardous reaction: None.

11. TOXICOLOGICAL INFORMATION

The following information is for the active ingredient, butachlor.

Acute oral LD₅₀ for rats 2000, mice 4747, rabbits >5010 mg/kg.

Acute dermal LD₅₀ for rabbits >13000 mg/kg.

Contact with the skin Moderate irritation to skin (rabbits).

Contact with the eyes Practically non-irritating to eyes (rabbits).

Inhalation LC₅₀ (4 h) for rats >3.34 mg/l air.

Sensitization Contact sensitization reactions observed in guinea pigs.

NOEL For rats 100 mg/kg diet (ppm), for mice 50 mg/kg diet (ppm), for dogs 5 mg/kg b.w. daily.

12. ECOLOGICAL INFORMATION

The following information is for the active ingredient, butachlor.

Butachlor is highly toxic to fish.

Birds Acute oral LD₅₀ for mallard ducks >4640 mg/kg. Dietary LC₅₀ (5 d) for mallard ducks >10 000, bobwhite quail 6597 mg/kg diet.

Fish LC₅₀ (96 h): for rainbow trout 0.52, bluegill sunfish 0.44, carp 0.32, channel catfish 0.10-0.14, fathead minnow 0.31 mg/l.

Daphnia LC₅₀ (48 h): 2.4 mg/l.

Bees Not toxic to bees. LD₅₀ (contact) >100 µg/bee.

13. DISPOSAL CONSIDERATION

Product: Do not reuse product containers. Dispose of product containers, waste containers, and residues according to local, state and environmental regulations.

14. TRANSPORT INFORMATION

Do not transport with food and feedstuffs.

Class: 6.1

UN No: 2769



SHANGHAI MINGDOU AGROCHEMICAL CO., LTD

Add: Rm 1210, Zhenyuan Building, No. 2052 North Zhongshan Rd, Shanghai, China

Tel: 0086 21 52912919, 52045380 Fax: 0086 21 52912097 Web: www.agromdc.com

Marine pollutant: Yes

15. REGULATORY INFORMATION

Keep locked up out of reach of children and other, unauthorized persons. Keep away from food, drink and animal feeding stuffs.

Users should wash hands before eating, drinking, chewing gum, using tobacco or using the toilet. Do not get in eyes, on skin or on clothing. Do not breathe dust, vapor or spray mist.

In case of accident or if you feel unwell, seek medical advice immediately.

This material and its container must be disposed of in a safe way.

16. OTHER INFORMATION

This MSDS summarizes our best knowledge of the health and safety hazard information of the product and how to safely handle and use the product in the workplace. Each user should read this MSDS and consider the information in the context of the how the product will be handled and used in the workplace including in conjunction with other products.

If clarification or further information is needed to ensure that an appropriate risk assessment can be made the user should contact the company.

END OF MSDS